

SUNSIGHT PRODUCT COMPARISON

ACCURATE. RELIABLE. SUNSIGHT.



AAT MINI

**+/- .30°
Azimuth Accuracy***

The Tower Climber Tool

Ideal for cell tower RF panel antenna alignment, meets the standards of all US carriers while being the light and durable for climbing.



AAT

**+/- .15°
Azimuth Accuracy***

The Standard Tool

Higher accuracy AAT model for directional antenna alignment requiring more precision than the carriers require.

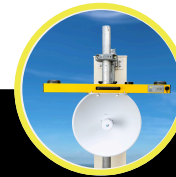


AAT MAX

**+/- .08°
Azimuth Accuracy***

The Special Tool

Whether your project has a narrow tolerance or just requires the highest level of accuracy our custom AAT Max model is right for you. Can be customized to your application.



MW

**+/- .15°
Azimuth Accuracy***

The Does It All Tool

Accurate enough to perform point to point alignment, while still being a suitable size for panel antenna mounts. This model performs both point-to-point (MW) and directional (RF panel) antenna alignment.



MW MAX

**+/- .08°
Azimuth Accuracy***

The Extreme Tool

When your link is long or high frequency the high accuracy of the MW Max is required. While the MW Max can perform directional antenna alignment it is not recommended due to its size.

*RMS Accuracy